

# devireg™ 850 ice and snow melting

**Ground or roof  
systems  
(1 - 4 sensors)**

## **Applications:**

devireg™ 850 is efficiently  
controlling ice and snow  
melting systems in:

- Driving areas
- Ramps
- Stairs
- Driveways
- Pavements
- Parking areas
- Doorways
- Loading areas
- Bridges
- Car parks
- Roofs
- Roof gutters

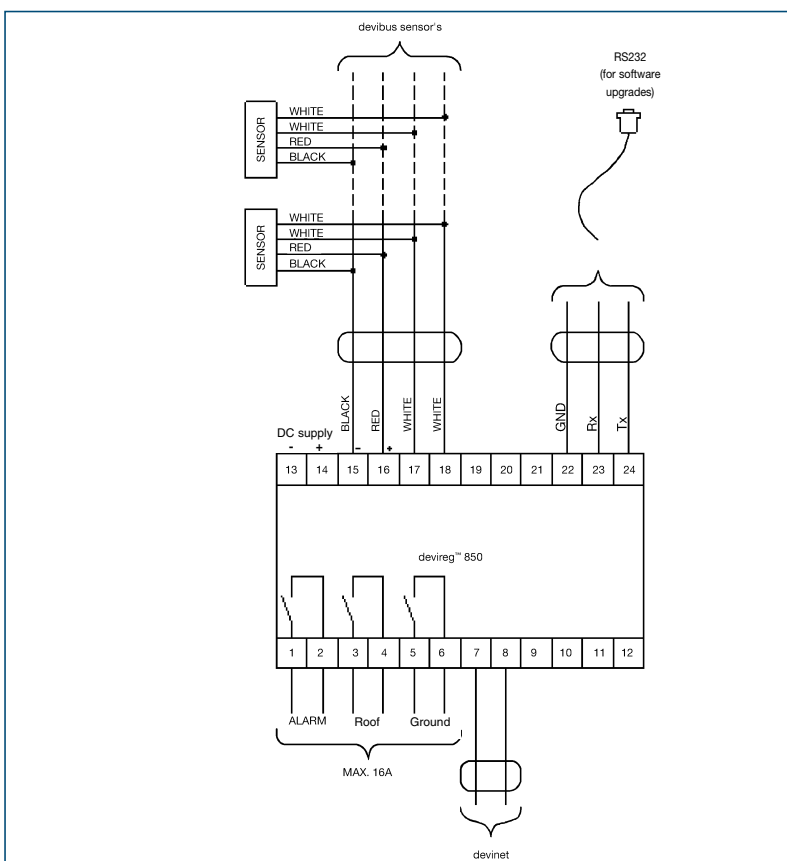


The devireg™ 850 is the most optimal solution for keeping an area free of ice and snow. devireg™ 850 acts on information received from the sensor(s) which register both temperature and moisture. devireg™ 850 calculates the information and secures that the heat only will be turned on when the right combination of low temperature and a certain level of moisture are detected. This gives an energy saving system and reduces running costs.

## Functions:

- **Multiple languages** in illuminated display.
- **Info-button** for help/information. The info-button will guide you through the menus and settings.
- View the actual temperature and moisture level measured by the sensors.
- Adjustable operation mode: Automatic, constant on, and constant off.
- Adjustable parameters: Melting temperature, standby temperature, moisture sensibility, post heating period.
- The Intelligent, digital sensors will reduce energy consumption and give an optimal protection. The sensors are easy to install and designed for rough weather and heavy traffic loads.
- **devibus™** enabled. Connect all sensors in parallel.
- **Fault finding programme.** The devireg™ 850 has a self diagnosing programme, which will detect faults and give an alarm.
- **Alarm function.** Blinking red light and a sound will indicate an alarm. Possibility of connecting external alarm.
- **RS232 enabled.** Connect the devireg™ 850 to a computer when a software upgrade is available.

Technical data	
<b>Voltage</b>	<b>230 VAC +10%/-20%</b>
<b>Power consumption</b> • devireg™ 850 • Sensor(s)	<b>Max. 3 W</b> <b>Ground: max. 13W, roof: max. 8W</b>
<b>Relays (all incl. alarm)</b> • Resistive load • Inductive load	<b>250V ~ 16A</b> <b>1A (power factor 0,3)</b>
<b>IP class</b> • devireg™ 850 • Sensors	<b>IP 20</b> <b>IP 67</b>
<b>Ambient temperature</b> • devireg™ 850 • Sensor - <u>ground</u> : • Sensor - <u>roof</u> :	<b>-10°C to +40°C</b> <b>-30°C to +70°C</b> <b>-50°C to +70°C</b>
<b>Sensor type</b>	<b>devibus™ connected moisture sensor(s)</b>
<b>Sensor lead</b>	<b>15 m of 4x1mm<sup>2</sup></b>
<b>Indication</b>	<b>2x16-character illuminated display.</b>
<b>Measurements</b> • devireg™ 850 (DIN rail) • Sensor - ground • Sensor tube - ground • Sensor - roof	<b>Depth x Height x Width</b> <b>53 mm x 86 mm x 105 mm</b> <b>D = 87 mm; height = 74 mm</b> <b>D = 93 mm; height = 98 mm</b> <b>15 mm x 23,5 mm x 216 mm</b>



DEVI A/S

Ulvehavevej 61

DK-7100 Vejle

Tel.: +45 76 42 47 00

Fax: +45 76 42 47 01

www.devi.com

**DEVI**  <sup>TM</sup>  
Member of the Danfoss Group